

Professional Office Space Now Available For Lease 720 E. Bullard Avenue, Suite 101

Ready To Move???

Ready For Immediate Occupancy

Approximately 2,478± sq. ft.

**9 Offices/Conference Room, Large Records/Filing Room, Storage
Centrally Located**

Conveniently Located Just East Of The Freeway 41/Bullard Exit

Competitive Lease Rate: \$1.15 per sq. ft. per month
(excludes utilities and janitorial affording the tenant more control over office comfort and costs)

**Very Clean - Neutral Colors - Office Signage Directly
Onto Bullard Avenue - Mature Landscape - Hard To
Find Shaded Parking**

**Contractor upgrades throughout: Interior glass French
Doors to large offices, interior framed windows opens and
ties the lobby, reception, and back office records area
nicely. Front office reception area is anchored with a
beautiful rich wood curved office desk.**



For Further Information, Contact:

ROBERT E. ELLIS

Robert Ellis Leasing & Investment, Inc.

680 West Shaw Avenue, Suite 202

Fresno, California 93704

(559) 228-8900 phone • (559) 228-8942 fax

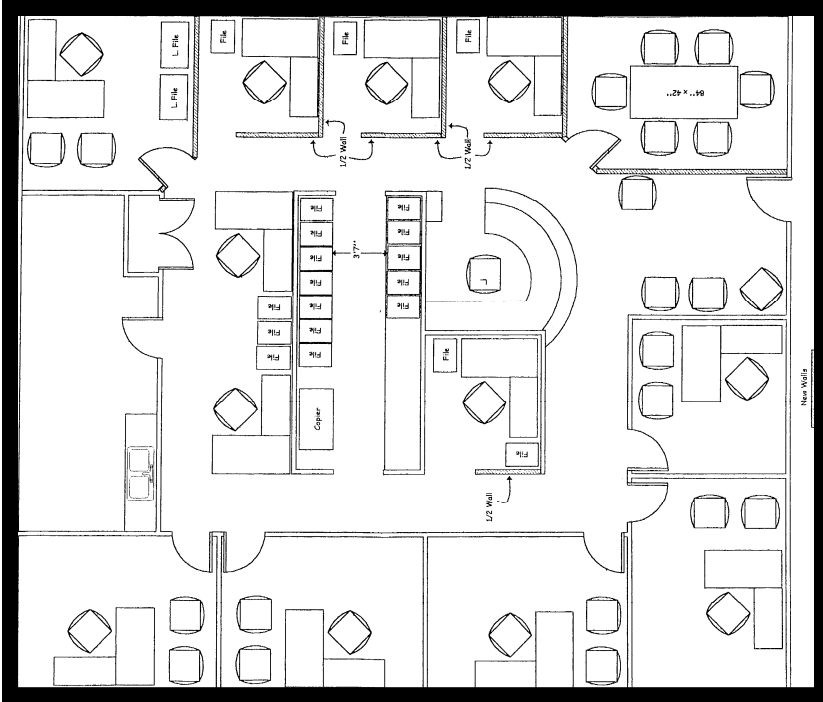
rellis@reli1.com • www.reli1.com

DRE License #00870649

RE **ROBERT ELLIS**
LI Leasing and Investment, Inc.

720 E. Bullard Avenue, Suite 101

FLOOR PLAN



AREA MAP



For Further Information, Contact:

ROBERT E. ELLIS

Robert Ellis Leasing & Investment, Inc.
680 West Shaw Avenue, Suite 202
Fresno, California 93704

(559) 228-8900 phone • (559) 228-8942 fax
rellis@reli1.com • www.reli1.com
DRE License #00870649

Neighboring Anchor Tenants Include:

Walgreens, Rite Aid, Save Mart Grocery Store, Dollar Tree, Fresno County Library, Awhanee Jr. High and Hoover High Schools, Restaurants, Surrounded by Business Professionals In Well maintained Professional Business Office Park, minutes from Saint Agnes Medical Center, California State University Fresno, Schools, Save Mart Grocery Store, Rite Aid, Walgreens, Restaurants.

This statement with the information it contains is given with the understanding that all negotiations relating to the purchase, renting or leasing of the property described above shall be conducted through this office. The above information, while not guaranteed, has been secured from sources we believe to be reliable.