

# FOR SALE

**2 - STORY OFFICE BUILDING**

**606 East Belmont Avenue**

**Fresno, California**

**\$565,000**

**Corner of Belmont and Echo, Easy Access To Freeways  
Approximately 8,934± Sq. Ft. on 12,500± Sq. Ft. Lot**



**MINUTES FROM DOWNTOWN, CITY/COUNTY/GOVERNMENT AGENCIES,  
COMMUNITY HOSPITAL, COUNTY COURTHOUSE**

**3,724± Sq. Ft. First Floor Plus 960± Sq. Ft. Gated Porch Area**

**And Approximately 5,210± Sq. Ft. Second Floor**

**APN: 459-034-01 • Currently Occupied Month to Month • Secured Parking  
Mature Landscaping • Great For Owner/User • Great Freeway Access**

For Further Information, Contact:

**ROBERT E. ELLIS**

680 West Shaw Avenue, Suite 202

Fresno, California 93704

(559) 228-8900 phone • (559) 228-8942 fax

rellis@reli1.com • www.reli1.com

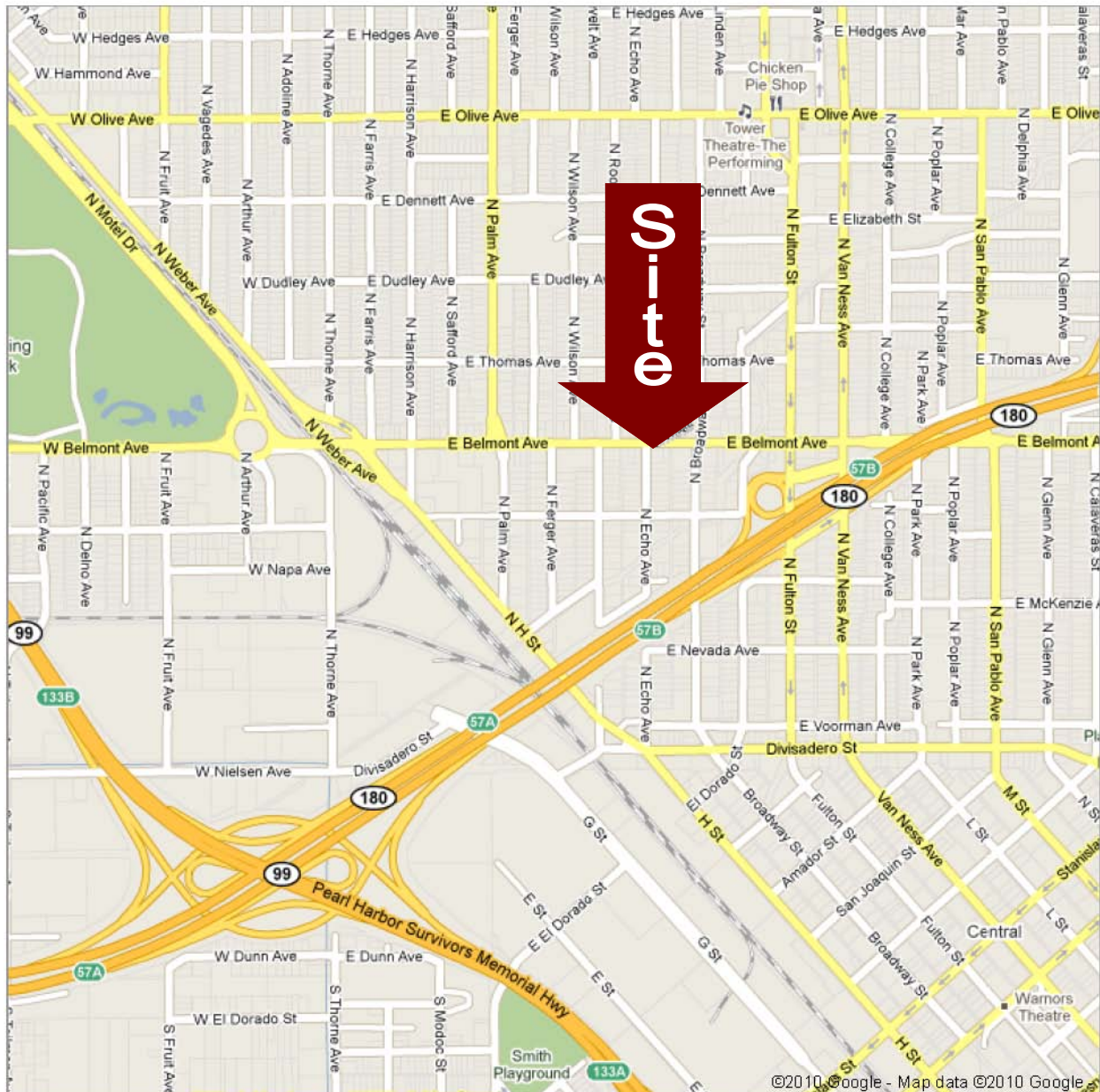
DRE License #00870649



**ROBERT ELLIS**  
Leasing and Investment, Inc.

# 606 East Belmont Avenue Fresno, California

## Site Map



For Further Information, Contact:

**ROBERT E. ELLIS**

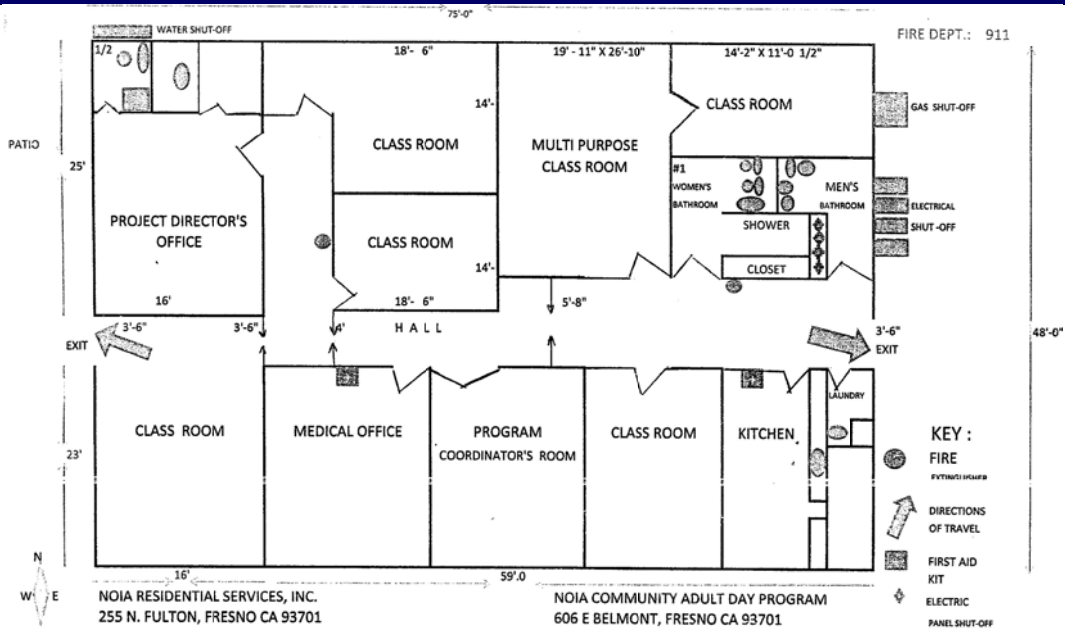
680 West Shaw Avenue, Suite 202 • Fresno, California 93704

(559) 228-8900 phone • (559) 228-8942 fax

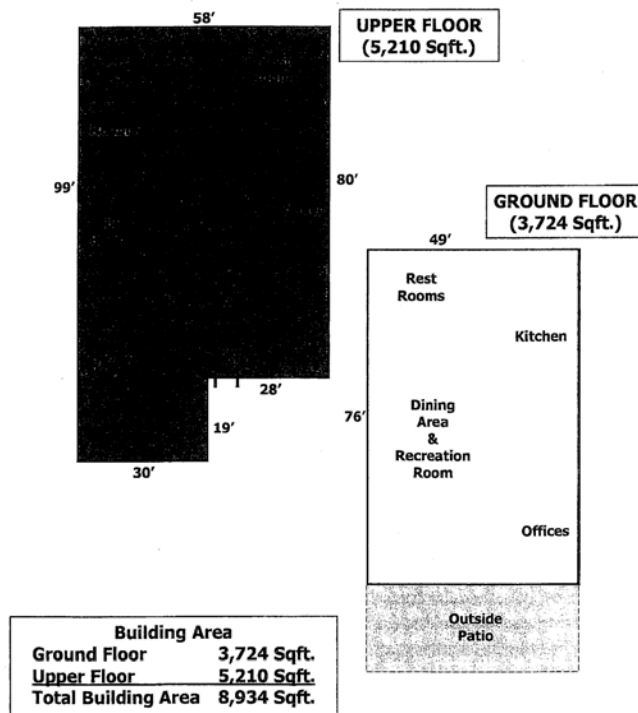
rellis@reli1.com • www.reli1.com • DRE License #00870649

# 606 East Belmont Avenue Fresno, California

## First Floor Plan



## Floor Plan



For Further Information, Contact:

**ROBERT E. ELLIS**

680 West Shaw Avenue, Suite 202 • Fresno, California 93704

(559) 228-8900 phone • (559) 228-8942 fax

rellis@reli1.com • www.reli1.com • DRE License #00870649